



**Department of Pesticide Regulation  
Environmental Monitoring Branch  
1001 I Street  
Sacramento, CA 95812**

**Study 310: Surface Water Monitoring for Pesticides in Agricultural Areas of Northern California, 2023**

**Mason Zoerner  
April 2023**

## **1. INTRODUCTION**

The California Department of Pesticide Regulation (CDPR) has conducted annual monitoring of agricultural pesticides in surface waters throughout California since 2008. (Deng, 2017; Main, 2019; Wagner, 2020; Zoerner, 2021). The Surface Water Protection Program (SWPP) established the long-term monitoring of agricultural regions of the California Central Coast and Imperial Valley in 2008 (Main, 2019). Agricultural monitoring expanded in 2017 to include surface waters in the Sacramento Valley (Wagner, 2017) and in 2019 to include the San Joaquin Valley (Wagner, 2019). Study 310 is a continuation of those efforts and contributes to long-term monitoring efforts as a part of the continuous evaluation process.

The San Joaquin Valley (SJV) is the most agriculturally productive region in California. Crops grown in the region include almonds, pistachios, grapes, oranges, tomatoes, corn, cotton, and a multitude of other fruits and vegetables (CDFA, 2023). In 2021, of the ten counties that contributed most to California's agricultural economy, seven were within the SJV (CDFA, 2023). As a region of intensive agricultural production, pesticide use is high compared to other parts of the state. In 2021, over 178 million pounds of agricultural pesticides were applied in the San Joaquin Valley (CDPR, 2023). The region is dry, and therefore intensive irrigation is required to enable its high crop output. In 2014, approximately 7.4 million acre-feet of water was applied for agricultural use in the San Joaquin River Basin, which was approximately 21% of all water applied in the state for that year (CDWR, 2018). With large volumes of pesticides and water applied, there is greater potential for pesticide transport into surface waters via agricultural runoff, making the SJV region a priority for surface water monitoring.

The Sacramento Valley (SV) is another major agricultural region for California. Like the SJV, it is also a dry region accompanied by high pesticide use and heavy irrigation. In 2021, over 37 million pounds of pesticides were applied for agricultural use in the Sacramento River basin (CDPR, 2023). Additionally, over 7 million acre-feet of water was applied for agricultural use in the SV in 2014 (CDWR, 2018). The region's main crop outputs include rice, nuts, grapes, peaches, plums, and tomatoes (CDFA, 2023). Rice production in the SV accounts for 97% of the 5 billion pounds yielded in California, annually (Wagner et al., 2019). Rice cultivation is a complex process which requires flood irrigation. Conventional water management systems for rice production are poorly adapted to water-holding requirements for rice pesticides;

consequently, tailwater may potentially discharge into adjacent waterways (UCANR, 2018). Seepage and drift also have the potential to influence transport of some rice pesticides (Firoved et al., 2019). In contrast, other top commodities in the region, such as nuts and grapes, often utilize drip irrigation to apply water directly to roots, which leads to significant decreases in runoff potential (Hedley, 2014). Thus, monitoring for rice pesticides has been a focus for CDPR since the inception of agricultural surface water monitoring in the SV (Wagner, 2017).

The SWPP will continue to monitor for pesticides in surface waters in the Sacramento and San Joaquin valleys in 2023. The monitoring schedule and site locations were established in previous years of the study (Wagner, 2018; Zoerner, 2021; Zoerner, 2022). Sample collection from long-term sites and adherence to the established annual monitoring schedule allows for collection of data that is spatially and temporally consistent over the years. Long-term monitoring data collected in this study will be used to assess potential impacts to aquatic environments and analyze patterns or trends in overall Central Valley pesticide detections.

## **2. OBJECTIVES**

The objectives of the study are to:

- Determine the presence and concentrations of selected pesticides in surface waters and sediments collected from selected sites;
- Assess potential impacts to aquatic organisms by comparing measured pesticide concentrations to USEPA aquatic life benchmarks;
- Determine the toxicity of collected water samples using toxicity tests conducted on representative test organisms, *Hyalella azteca* and *Chironomus dilutus*;
- Evaluate spatial correlations between observed pesticide concentrations/detection frequencies and region-specific pesticide use data; and
- Analyze patterns and trends in pesticide concentrations.

### 3. PERSONNEL

The study will be conducted by Surface Water Protection Program staff under the general direction of Anson Main, Ph.D., Environmental Program Manager. Key personnel are listed below:

- Project Leader: Mason Zoerner
- Field Coordinator: KayLynn Newhart
- Reviewing Scientist: Robert Budd, Ph.D.
- Statistician: Xuyang Zhang, Ph.D.
- Laboratory Liaison: Joshua Alvarado
- Analytical Chemistry: Center for Analytical Chemistry, California Department of Food and Agriculture (CDFA)

Please direct questions regarding this study to Mason Zoerner, Environmental Scientist, at 916-324-4087 or [Mason.Zoerner@cdpr.ca.gov](mailto:Mason.Zoerner@cdpr.ca.gov).

### 4. STUDY PLAN

#### 4.1. Selection of monitoring sites

Monitoring will occur at three sites in the SJV and at five sites in the SV. All study sites were defined in the previous years of the study (Wagner, 2017; Zoerner, 2022). Sites were selected in watersheds which were determined to be of highest monitoring priority by the Surface Water Monitoring Prioritization (SWMP) model. This model considers pesticide use data and physiochemical properties of applied pesticides to designate watersheds of greatest potential for contamination (Luo et al., 2017). Candidate watersheds for monitoring are listed in Table 1. The SWPP staff also considered hydrography, seasonal flows, and crop irrigation type in the selection of sites (Wagner, 2020). Site visits were conducted prior to sampling to verify site suitability and accessibility. Sampling sites are listed in Tables 2 and 3. Site maps are included in Figures 1 and 2.

#### 4.2. Selection of pesticides

Pesticides to be screened in water were determined using the SWMP. This model uses toxicity and reported pesticide use to identify active ingredients (AIs) of highest monitoring priority in a given watershed (Luo and Deng, 2015). Monitoring priority was ranked based on results of watersheds for each site, combined. Model outputs for each site are listed in Table 4.

The AIs to be screened for the selected watersheds were designated based on the following criteria:

1. Pesticides with a use score  $\geq 2$  or a final score  $\geq 9$  are of high priority and were considered for monitoring. Those with a final score  $< 9$  are considered low priority due to low use score (use score  $< 2$ ) or low toxicity (toxicity score  $< 3$ ).

2. Low-priority pesticides are not included in the final monitoring list (Table 4) but may be monitored as part of a larger analytical screen.
3. Historical monitoring data or current availability of analytical methods at the CDFA lab were additional factors to help arrive at a final list for monitoring.

#### **4.3. Sampling schedule**

Sampling will occur four times in the SJV between June and September, and five times in the SV between May and September. The monitoring period is intended to coincide with the peak pesticide application and irrigation period. An additional sampling event in each region may occur at the first major storm following the September sampling. Storm samples are intended to check for pesticide concentrations associated with storm runoff. If the first major storm lacks sufficient precipitation to produce runoff, or if weather conditions do not permit safe travel, then the storm sampling will not take place. The full sampling schedule is listed in Tables 7 and 8.

#### **4.4. Sample collection.**

Surface water samples for chemical analysis will be collected during each sampling event. Samples will be collected using 1 L amber glass bottles, by hand or by sampling pole. Bottles will be submerged into waterways at a depth of approximately 10 cm below the surface and sealed once full (Bennett, 1997; Deng and Ensminger, 2021). Sediment samples will be collected in July, at three sites in the SJV and at two sites in the SV. Composite sediment samples will be collected from waterway banks using a stainless-steel scoop, sieved with a 2 mm sieve, and sealed in half-pint glass Mason jars (Deng and Ensminger, 2021; Mamola, 2005). All sample containers will be rinsed prior to placement in an ice chest, maintaining samples in a 4°C environment for the duration of transport (Deng and Ensminger, 2021; Jones, 1999).

#### **4.5. Field measurements**

Field measurements will be taken concurrently with sample collection at each site. Staff will use a multiparameter sonde, the In-Situ AquaTroll 400 (In-Situ Incorporated, Fort Collins, CO, USA) to measure temperature, specific conductivity, total dissolved solids, salinity, dissolved oxygen, and pH. All field measurements follow closely to those described in the standard operating procedure for the YSI EXO1 multiparameter sonde (Edgerton, 2020).

## **5. LABORATORY ANALYSES**

### **5.1. Chemical Analysis**

Chemical analysis for this study will be conducted by the Center for Analytical Chemistry at the California Department of Food and Agriculture (CDFA). The laboratory will use multi-residue liquid chromatography tandem mass spectrometry (LC-MS/MS) to screen pesticide AIs in collected water samples. Additional screens will be used to measure concentrations of pyrethroids, dinitroanilines, and glyphosate. Sediment samples will be screened for pyrethroids. Pesticides to be analyzed, as well as their respective reporting limits, are listed in Tables 4 and 5. Extractions will include laboratory blanks and matrix spikes, as per CDPR QA/QC guidelines (Peoples, 2019; Segawa, 1995).

### **5.2. Organic Carbon and Suspended Solid Analyses**

The SWPP staff will use a Vario TOC Cube TOC/TNb Analyzer (Elementar Analysensysteme GmbH, Langensfeld, Germany) to analyze total organic carbon (TOC) of water and sediment samples, as well as dissolved organic carbon (DOC) of water samples, following methods similar to those outlined by Ensminger (2013) and by Goodell (2016). Staff will also measure total suspended solids (TSS) of water samples using a vacuum pump and glass fiber microfilters (Ensminger, 2016). Laboratory blanks and calibration standards will be run prior to each sample set to ensure high data quality.

### **5.3. Toxicity.**

Samples for toxicity testing will be collected in each region in June and September, as well as during the storm sampling event. During these sampling events, toxicity samples will be collected at each site. The samples will then be transported to the University of California, Davis (UCD), Aquatic Health Program Laboratory, where UCD laboratory will test for mortality of *Hyaella azteca* and *Chironomus dilutus* on a 96-hour acute exposure basis.

## **6. DATA ANALYSIS**

Data from this study will be entered into a Microsoft Office Access database which contains field measurements and laboratory results for all CDPR agricultural surface water monitoring studies. Data collected in the study will also be uploaded to the publicly-available Surface Water Database (SURF). Spatial analysis may be conducted using ArcGIS and R to identify correlations between reported pesticide use and observed detections. Observed pesticide concentrations in collected water samples will also be compared to USEPA aquatic life benchmarks (USEPA, 2018) to determine potential toxicity. Additionally, concentrations of some rice pesticides will be compared to water quality performance goals established by the Central Valley Regional Water Quality Control Board (CCVRWQCB, 2010).

## 7. TIMETABLE

Field Sampling: May 2023 – December 2023 (Table 7, 8)

Chemical Analysis: May 2023 – December 2023

Summary Report: March 2024

SURF Data Upload: May 2024

## 8. REFERENCES

- Bennett, K. 1997. California Department of Pesticide Regulation SOP FSWA002.00: Conducting surface water monitoring for pesticides. California Department of Pesticide Regulation.
- California Central Valley Regional Water Quality Control Board, 2012. Resolution No. R5-2010-9001 Rice Pesticides Program – Control of Rice Pesticides. [https://www.waterboards.ca.gov/rwqcb5/board\\_decisions/adopted\\_orders/resolutions/r5-2010-9001.pdf](https://www.waterboards.ca.gov/rwqcb5/board_decisions/adopted_orders/resolutions/r5-2010-9001.pdf)
- California Department of Food and Agriculture. 2023. California Agricultural Review 2021- 2022. [https://www.cdffa.ca.gov/Statistics/PDFs/2022\\_Ag\\_Stats\\_Review.pdf](https://www.cdffa.ca.gov/Statistics/PDFs/2022_Ag_Stats_Review.pdf)
- California Department of Pesticide Regulation. 2023. California Pesticide Information Portal query (accessed April 17, 2023). <https://calpip.cdpr.ca.gov/main.cfm>
- California Department of Water Resources. 2018. California Water Plan Update 2018. <https://water.ca.gov/-/media/DWR-Website/Web-Pages/Programs/California-Water-Plan/Docs/Update2018/Final/California-Water-Plan-Update-2018.pdf>
- Deng, X. and Ensminger, M. 2021. California Department of Pesticide Regulation SOP FSWA017.00: Procedures for Collecting Water and Sediment Samples for Pesticide Analysis. California Department of Pesticide Regulation.
- Deng, X. 2017. Study 304: Surface Water Monitoring for Pesticides in Agricultural Areas in Central Coast and Southern California, 2017. California Department of Pesticide Regulation. [http://www.cdpr.ca.gov/docs/emon/pubs/protocol/study304\\_deng\\_march\\_2017.pdf](http://www.cdpr.ca.gov/docs/emon/pubs/protocol/study304_deng_march_2017.pdf)
- Edgerton, E. 2020. CDPR SOP (Standard Operating Procedures) EQWA012.00: Calibration, Field Measurement, Cleaning, and Storage of the YSI EXO1 Multi-parameter Sonde. <https://www.cdpr.ca.gov/docs/emon/pubs/sops/eqwa012.pdf>
- Ensminger, M. 2013. California Department of Pesticide Regulation SOP METH011.00: Water TOC Analysis Using the Shimadzu TOC-VCSN and ASI-V Autosampler. California Department of Pesticide Regulation.
- Ensminger, M. 2016. California Department of Pesticide Regulation SOP METH010.01: Analysis of Whole Sample Suspended Sediments in Water. California Department of Pesticide Regulation. <https://www.cdpr.ca.gov/docs/emon/pubs/sops/meth010.01.pdf>
- Fivored, R., J. Krenz-Raurk, and K. Paris. 2019. 2019 Rice Pesticides Program Monitoring Summary. California Rice Commission.
- Goodell, K. 2016. California Department of Pesticide Regulation SOP METH013.00: Sediment TOC analysis using Shimadzu TOC-Vcsn and SSM-5000A.

<https://www.cdpr.ca.gov/docs/emon/pubs/sops/meth01300.pdf>

Hedley, C.B., J.W. Knox, S.R. Raine, R. Smith. 2014. Water: Advanced Irrigation Technologies. Encyclopedia of Agriculture and Food Systems. Academic Press. Pages 378-406.

<https://doi.org/10.1016/B978-0-444-52512-3.00087-5>.

Irrigated Lands Regulatory Program (ILRP). 2019. California State Water Resources Control Board.

[https://www.waterboards.ca.gov/water\\_issues/programs/agriculture/docs/about\\_agwaivers.pdf](https://www.waterboards.ca.gov/water_issues/programs/agriculture/docs/about_agwaivers.pdf)

Jones, D. 1999. California Department of Pesticide Regulation SOP QAQC004.01: Transporting, packaging, and shipping samples from the field to the warehouse or laboratory. California Department of Pesticide Regulation.

Luo, Y and X. Deng. 2015. Methodology for prioritizing Pesticides for Surface Water Monitoring in Agricultural and Urban Areas III: Watershed-Based Prioritization. California Department of Pesticide Regulation.

[http://www.cdpr.ca.gov/docs/emon/pubs/ehapreps/analysis\\_memos/luo\\_prioritization\\_3.pdf](http://www.cdpr.ca.gov/docs/emon/pubs/ehapreps/analysis_memos/luo_prioritization_3.pdf)

Luo, Y, M. Ensminger, R. Budd, D. Wang, X. Deng. 2017. Methodology for prioritizing areas of interest for surface water monitoring in urban receiving waters of California. California Department of Pesticide Regulation.

[https://www.cdpr.ca.gov/docs/emon/pubs/anl\\_methds/luo\\_aol\\_determination\\_final.pdf](https://www.cdpr.ca.gov/docs/emon/pubs/anl_methds/luo_aol_determination_final.pdf)

Main, A. 2019. Study 321. Surface Water Monitoring for Pesticides in Agricultural Areas in Central Coast and Southern California, 2019. California Department of Pesticide Regulation.

[https://www.cdpr.ca.gov/docs/emon/pubs/protocol/study321\\_monitoring\\_2019.pdf](https://www.cdpr.ca.gov/docs/emon/pubs/protocol/study321_monitoring_2019.pdf)

Mamola, M. 2005. California Department of Pesticide Regulation SOP FSWA016.00: Collecting sediment samples for pesticide analysis. California Department of Pesticide Regulation.

Peoples, Chang-Sook Lee. 2019. Chemistry Laboratory Quality Control. Environmental Monitoring Branch. California Department of Pesticide Regulation.

<https://www.cdpr.ca.gov/docs/emon/pubs/sops/qaqc00101.pdf>

Segawa, R. 1995. Chemistry Laboratory Quality Control. Environmental Hazards Assessment Program. QAQC001.00. California Department of Pesticide Regulation.

United States Environmental Protection Agency. 2018. Aquatic Life Benchmarks and Ecological Risk Assessments for Registered Pesticides. <https://www.epa.gov/pesticide-science-and-assessing-pesticide-risks/aquatic-lifebenchmarks-and-ecological-risk>

University of California Agriculture and Natural Resources. 2018. Rice Production Manual. Page 70. Retrieved from [http://rice.ucanr.edu/Reports-Publications/Rice\\_Production\\_Workshop\\_Manual/](http://rice.ucanr.edu/Reports-Publications/Rice_Production_Workshop_Manual/)

Wagner, S., D. Wang, and K. Newhart. Pesticide Use and Monitoring in Surface Waters of California Rice Production Regions. Chapter 7 of Pesticides in Surface Water: Monitoring, Modeling, Risk Assessment, and Management. Page 101-118. Volume 1308. American Chemical Society.

Wagner, S. 2017. Study 310: Surface Water Monitoring for Pesticides in Agricultural Areas of Northern California, 2017. California Department of Pesticide Regulation.

Wagner, S. 2018. Study 310: Surface Water Monitoring for Pesticides in Agricultural Areas of Northern California, 2018. California Department of Pesticide Regulation.

Wagner, S. 2019. Study 310: Surface Water Monitoring for Pesticides in Agricultural Areas of Northern California, 2019. California Department of Pesticide Regulation.

[https://www.cdpr.ca.gov/docs/emon/pubs/protocol/study310\\_wagner\\_2019.pdf](https://www.cdpr.ca.gov/docs/emon/pubs/protocol/study310_wagner_2019.pdf)

Wagner, S. 2020. Study 310: Surface Water Monitoring for Pesticides in Agricultural Areas of Northern California, 2020. California Department of Pesticide Regulation.

Zoerner, M. 2021. Study 310: Surface Water Monitoring for Pesticides in Agricultural Areas of Northern California, 2021. California Department of Pesticide Regulation.

Zoerner, M. 2022. Study 310: Surface Water Monitoring for Pesticides in Agricultural Areas of Northern California, 2022. California Department of Pesticide Regulation.

[https://www.cdpr.ca.gov/docs/emon/pubs/protocol/study310\\_surface\\_water2021.pdf](https://www.cdpr.ca.gov/docs/emon/pubs/protocol/study310_surface_water2021.pdf)



## 9. TABLES

Table 1. Candidate watersheds for monitoring, as identified by the watershed prioritization model. Hydrologic Unit (HU) refers to watershed boundaries defined by United States Geological Survey (USGS).

<b>HU</b>	<b>HU Name</b>	<b>Type</b>
<b><i>18020163:</i></b>		
180201630502	Gibson Canyon Creek-Sweany Creek	mainstem
180201630102	Lamb Valley Slough-South Fork Willow Slough	mainstem
180201630203	South Fork Ditch-Willow Slough	mainstem
180201630501	McCune Creek-Sweany Creek	tributary
180201630301	Knights Landing Ridge Cut	tributary
180201630602	Tremont School	tributary
<b><i>18020104:</i></b>		
180201040703	Salt Creek	mainstem
180201040203	Lower Walker Creek	mainstem
180201040504	Lower Logan Creek	mainstem
180201041201	Deadmans Reach-Sacramento River	tributary
180201041008	Smith Creek-Colusa Basin Drainage Canal	tributary
180201041003	Clarks Ditch-Colusa Basin Drainage Canal	tributary
<b><i>18020159:</i></b>		
180201590400	Gilsizer Slough-Snake River	tributary
180201590107	Wilson Creek-North Honcut Creek	tributary
180201590502	Ellis Lake-Feather River	tributary
180201590107	Wilson Creek-North Honcut Creek	mainstem
180201590302	Reeds Creek	mainstem

Table 2. Description of Study 310 Sacramento Valley sampling sites in 2023.

<b>Site ID</b>	<b>Site Location</b>	<b>County</b>	<b>HU-12 Watershed</b>	<b>Latitude</b>	<b>Longitude</b>
LLC_SCC	Stone Corral Creek near Maxwell Rd	Colusa	Lower Logan Creek	39.2751	-122.1043
WC_Willow	Willow Creek at Norman Rd	Colusa	Willow Creek	39.406432	-122.080504
CD_Bounde Creek	Bounde Creek at Norman Rd	Colusa	Colusa Drain	39.406297	-122.055885
CD_CBD	Colusa Basin Drain at County Line Rd	Yolo	Clarks Ditch-Colusa Basin Drain	38.924458	-121.913986
LA12	Lateral A12C-0379 at Biggs-Princeton Rd	Butte	Drumheller Slough-Butte Creek	39.421061	-121.772073
BS1	Butte Slough at Pass Rd	Sutter	Gilsizer Slough-Snake River	39.187300	-121.908955

Table 3. Description of Study 310 San Joaquin Valley sampling sites in 2023.

<b>Site ID</b>	<b>Site Location</b>	<b>County</b>	<b>HU-12 Watershed</b>	<b>Latitude</b>	<b>Longitude</b>
SS_DMC	Deadman Creek at Gurr Road	Merced	South Slough-Deadman Creek	37.19514	-120.56147
SJ_Hilmar	Hilmar Drain at Central Ave	Merced	Town of Hilmar-San Joaquin River	37.390450	-120.941090
IC_INC	Ingram Creek at River Road	Stanislaus	Ingram Creek	37.60022	-121.22506

Table 4. Highest scoring pesticides recommended for monitoring using the SWMP model, based on 2018–2020 pesticide use reports for combined watersheds identified in Table 1.

Chemical Name	Use Score	Toxicity Score	Final Score	Does the model recommend monitoring?
BIFENTHRIN	3	8	24	Yes
LAMBDA-CYHALOTHRIN	3	8	24	Yes
CHLORPYRIFOS	3	7	21	Yes
CHLOROTHALONIL*	5	4	20	No
OXYFLUORFEN	4	5	20	Yes
PARAQUAT DICHLORIDE	4	5	20	Yes
PENDIMETHALIN	4	4	16	Yes
S-METOLACHLOR	4	4	16	Yes
ESFENVALERATE	2	8	16	Yes
PROPANIL	5	3	15	Yes
MANCOZEB*	5	3	15	No
DIAZINON	3	5	15	Yes
CARBARYL	3	5	15	Yes
PERMETHRIN	2	7	14	Yes
ZIRAM*	4	3	12	No
THIOBENCARB	4	3	12	Yes
GLUFOSINATE-AMMONIUM	4	3	12	Yes
AZOXYSTROBIN	4	3	12	Yes
METHOXYFENOZIDE	4	3	12	Yes
TRIFLURALIN	3	4	12	Yes
ETHALFLURALIN	3	4	12	Yes
CHLORANTRANILIPROLE	3	4	12	Yes
PYRACLOSTROBIN	3	4	12	Yes
HALOSULFURON-METHYL*	2	6	12	No
IMIDACLOPRID	2	5	10	Yes
ABAMECTIN	2	5	10	Yes
DIURON	2	5	10	Yes
FLUMIOXAZIN*	2	5	10	No
PROPICONAZOLE	3	3	9	Yes
CAPTAN*	3	3	9	No
CYPRODINIL	3	3	9	Yes
ORYZALIN	3	3	9	Yes
SPIRODICLOFEN	3	3	9	Yes
BIFENAZATE	4	2	8	No

\*Analytes with an asterisk (\*) will not be screened, either due to low historic detections or no analytical methods available.

Table 5. Reporting limits and method detection limits for pesticides monitored in 2023.

Analytical Screen	Analyte	Method Detection Limit (µg/L)	Reporting Limit (µg/L)
LC	2,4-D	0.004	0.05
LC	Abamectin	0.004	0.02
LC	Acetamiprid	0.004	0.02
LC	Atrazine	0.004	0.02
LC	Azoxystrobin	0.004	0.02
LC	Bensulide	0.004	0.02
LC	Bromacil	0.004	0.02
LC	Carbaryl	0.004	0.02
LC	Chlorantraniliprole	0.004	0.02
LC	Chlorpyrifos	0.004	0.02
LC	Clothianidin	0.004	0.02
LC	Cyprodinil	0.004	0.02
LC	Diazinon	0.004	0.02
LC	Diflubenzuron	0.004	0.02
LC	Dimethoate	0.004	0.02
LC	Diuron	0.004	0.02
LC	Ethoprop	0.004	0.02
LC	Etofenprox	0.004	0.02
LC	Hexazinone	0.004	0.02
LC	Imidacloprid	0.004	0.01
LC	Indoxacarb	0.004	0.02
LC	Isoxaben	0.004	0.02
LC	Kresoxim-methyl	0.004	0.02
LC	Malathion	0.004	0.02
LC	Methidathion	0.004	0.02
LC	Methomyl	0.004	0.02
LC	Methoxyfenozide	0.004	0.02
LC	Metribuzin	0.004	0.02
LC	Norflurazon	0.004	0.02
LC	Oryzalin	0.004	0.02
LC	Oxadiazon	0.004	0.02
LC	Prometon	0.004	0.02
LC	Prometryn	0.004	0.02
LC	Propanil	0.004	0.02
LC	Propargite	0.004	0.02
LC	Propiconazole	0.004	0.02
LC	Pyraclostrobin	0.004	0.02
LC	Pyriproxyfen	0.004	0.015
LC	Quinoxifen	0.004	0.02
LC	Simazine	0.004	0.02
LC	S-Metolachlor	0.004	0.02

LC	Tebufenozide	0.004	0.02
LC	Thiamethoxam	0.004	0.02
LC	Thiobencarb	0.004	0.02
LC	Trifloxystrobin	0.004	0.02
LC	Fipronil	0.004	0.01
LC	Fipronil Amide	0.004	0.01
LC	Fipronil Sulfide	0.004	0.01
LC	Fipronil Sulfone	0.004	0.01
LC	Desulfinyl Fipronil	0.004	0.01
LC	Desulfinyl Fipronil Amide	0.004	0.01
PY	Bifenthrin	0.00099	0.001
PY	Permethrin (cis)	0.00074	0.001
PY	Permethrin (trans)	0.00087	0.001
PY	Cypermethrin	0.00183	0.005
PY	Lambda-cyhalothrin	0.00137	0.002
PY	Esfenvalerate/fenvalerate	0.00238	0.005
DN	Benfluralin	0.012	0.05
DN	Ethalfuralin	0.015	0.05
DN	Oxyfluorfen	0.01	0.05
DN	Pendimethalin	0.012	0.05
DN	Prodiamine	0.012	0.05
DN	Trifluralin	0.014	0.05

Table 6. Pyrethroid insecticides included in the Study 310 sediment analysis. All sediment samples will be analyzed for the presence of pyrethroids by the CDFA Center for Analytical Chemistry laboratory.

Pesticide	Method Detection Limit (ng g <sup>-1</sup> dry weight)	Reporting Limit (ng g <sup>-1</sup> dry weight)
Bifenthrin	0.1083	1.0
Cypermethrin	0.107	1.0
Esfenvalerate/fenvalerate	0.143	1.0
Lambda-cyhalothrin	0.1154	1.0
Permethrin cis	0.1159	1.0
Permethrin trans	0.1352	1.0

Table 7. Monitoring schedule for sites in the Sacramento Valley, 2023. Numbers listed indicate the amount of each type of sample collected.

	May (Event 1)	May (Event 2)	June	July	August	September	Storm Event
LC screen (full)	6	6	6	6	0	6	6
Pyrethroid screen	6	6	6	6	0	6	6
Glyphosate screen	0	0	6	6	0	6	6
Sediment pyrethroid screen	0	0	0	0	0	3	0
Toxicity testing (Hyaella)	0	0	6	0	0	6	6
Toxicity testing (Chironomus)	0	0	6	0	0	6	6

Table 8: Monitoring schedule for sites in the San Joaquin Valley, 2023.

	May	June	July	August	September	Storm Event
LC screen (full)	0	3	3	3	3	3
Pyrethroid screen	0	3	3	3	3	3
Dinitroaniline screen	0	3	3	3	3	3
Sediment pyrethroid screen	0	0	0	0	2	0
Toxicity testing (Hyaella)	0	3	0	0	3	3
Toxicity testing (Chironomus)	0	3	0	0	3	3

## 10. FIGURES

Figure 1: Map of Sacramento Valley (SV) monitoring sites.

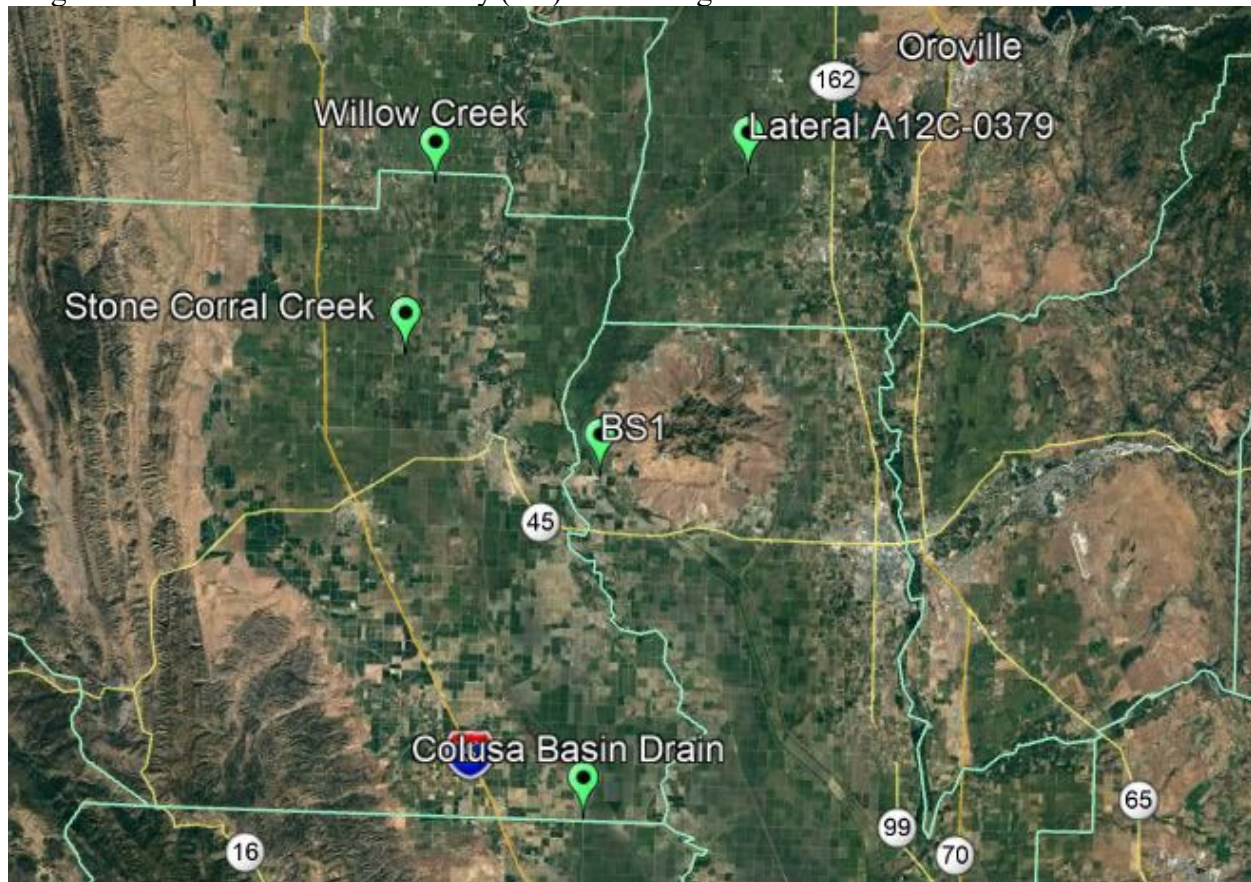




Figure 2: Map of San Joaquin Valley (SJV) monitoring sites.

