



## PROBLEM FORMULATION DOCUMENT

### $\beta$ -CYFLUTHRIN, CYFLUTHRIN

January 3, 2018

#### **Introduction**

The Department of Pesticide Regulation (DPR) has initiated a comprehensive risk and exposure assessment of the active ingredient cyfluthrin and its isomeric enriched form,  $\beta$ -cyfluthrin. DPR has concerns about acute and chronic exposures to these pesticides and has identified potential adverse health effects in studies sufficient to initiate the risk characterization process. The first step in this process is to develop a Problem Formulation Document that provides a scope for the risk assessment, potential exposure scenarios, and future mitigation activities that may be proposed. DPR expects the scope of the risk assessment for these compounds to be broad. DPR plans on evaluating risks from acute, subchronic, and chronic exposures to workers, residents and bystanders.

#### **Background**

Risk characterization plays a critical role in DPR's evaluation of the potential human health hazards associated with pesticide exposure. The breadth and depth of the risk assessment depends on the data available and the level of concern DPR has for adverse effects of the pesticide. The toxicological effects are identified by a review of studies DPR requires from the registrants and peer-reviewed literature. The exposure assessment may be a simple assessment based on readily available data and conservative assumptions (screening-level assessment) resulting in point estimates for exposure assessment. If DPR believes a more refined assessment is necessary, then DPR may rely on data specific to the pesticide and the exposure scenario as well as complex models to generate a probabilistic exposure assessment. To support DPR's decision making, staff may assess potential dietary (food and drinking water), workplace, residence, and ambient air exposures.

During the Problem Formulation/Scoping phase, risk managers and risk assessors meet and discuss the scope of the risk assessment for a specific pesticide. Information and data relevant to the pesticide is reviewed and evaluated to determine the scope of the risk characterization document. The information and data that may be evaluated during the risk characterization process includes toxicology, pesticide use reports, pesticide sales, illness reports, monitoring data, primary uses of the pesticide, exposure scenarios identified on the labels, potential exposure pathways, adverse effects reports, relevant United States Environmental Protection Agency (U.S. EPA) risk assessments, important sources of uncertainty and variability in the data, and potential mitigation options.

## PROBLEM FORMULATION DOCUMENT

January 3, 2018

Page 2

The internal problem formulation/scoping discussions resulted in this Problem Formulation Document and a diagram of exposure pathways. These documents will be presented to the Pesticide Registration and Evaluation Committee (PREC) for the committee's comments, as well as posted on DPR's website for public comment. The public comment period is 60 days after posting the documents. All written or emailed comments submitted to DPR will be considered in the preparation of the Risk Characterization Document (RCD).

### **Summary**

#### **1. Reasons for entering the risk assessment process**

The primary reasons, DPR is entering  $\beta$ -cyfluthrin and cyfluthrin into the risk assessment process are:

- a. DPR has concerns regarding toxicity in animal studies:
  - developmental effects, and
  - reproductive effects
- b. As required by Food and Agricultural Code section 12825.5, registrants of  $\beta$ -cyfluthrin and cyfluthrin products notify DPR of potential adverse effects. DPR staff reviewed the potential adverse effects submitted from 2008 – 2016. Nearly all alleged human adverse effects were classified "minor" or "minimal." There were five human deaths and 12 "moderate" cases among all the potential adverse effects reported to DPR from 2008 – 2016 (804 total human cases). Although these incidents are typically self-reported by the public and are not confirmed to be attributed to actual  $\beta$ -cyfluthrin or cyfluthrin use or exposure, they indicate a potential for human exposure and suggest that further investigation of these compounds is warranted.

#### **2. Primary uses in California**

The primary use of  $\beta$ -cyfluthrin and cyfluthrin in California include:

- a. Treatment of broad range of agricultural crops and commodities for insect pests; and
- b. Treatment of commercial and residential structures for roaches, ants, and other insect pests.

#### **3. Potential toxicological effects.**

The effects of cyfluthrin treatment in animal studies included, but were not limited to, the following:

- a. Neurotoxicity from acute, subchronic, and chronic exposures (e.g. sensory irritation, tremors, behavioral changes, altered gait, respiratory apnea, etc.).
- b. Developmental effects from prenatal exposures (e.g. malformations and tremors).

#### **4. Exposure scenarios to be considered in the exposure assessment**

Cyfluthrin and  $\beta$ -cyfluthrin have products that are used in agriculture and/or residential settings. Staff will review the labels of active products containing cyfluthrin and  $\beta$ -cyfluthrin. Based on the label reviews and three guidance documents (Beauvais *et al.*, 2007; U.S. EPA, 2012; U.S. EPA, 2017), staff will identify the exposure scenarios for agricultural and residential applications for evaluation in the Exposure Assessment Document.

#### **5. Potential exposure pathways diagram (Conceptual model)**

Figure 1 shows a diagram of potential exposure pathways (i.e., conceptual model) of human exposure to cyfluthrin and  $\beta$ -cyfluthrin containing products. Based on the agricultural and non-agricultural uses identified on the 67 product labels, different sources of pesticide release are possible, i.e., spray drift, direct application (outdoor and indoor), treated raw agricultural commodities, runoff, treated indoor environment, treated turf and crops. Near field computer models and (or) monitoring data coupled with human exposure assessment models will be used for characterizing the amount of pesticides released into the exposure media (e.g., air, soil, food, and drinking water) and eventually received by the receptors of interest (e.g., pesticide handlers and residential bystanders including women of childbearing age and children). The computer models useful in this assessment include Agricultural spray DRIFT (AgDRIFT) (Teske *et al.*, 2002), Agricultural DISPersal near-wake Lagrangian model (AGDISP) (Teske and Curbishley, 2011), exposure assessment model for reentry workers (U.S. EPA, 2017), Dietary Exposure Assessment Module (DEEM<sup>TM</sup>) (Kidwell *et al.*, 2000), swimmer exposure assessment model (SWIMODEL) (U.S. EPA, 2016), various water exposure assessment models employed by the U.S. EPA (U.S. EPA, 1998) and indoor exposure models as specified in the U.S. EPA Standard Operating Procedures for Residential Pesticide Exposure Assessment (U.S. EPA, 2012). The monitoring data for use in assessing the exposure will be derived from both internal and external sources (Eberhart and Hixson, 1985; Eberhart, 1986; Loeffler, 1986; Stout *et al.*, 1995; Klonne *et al.*, 2000; Keenan *et al.*, 2010; Zhang, 2010; REJV, 2014). If applicable, pesticide use report (PUR) data in concert with information based on geographical information system (GIS) technology will be employed for characterizing the use pattern of the pesticides under agricultural settings. Also, information on track-in dust particles derived from outdoor environment and pesticide laden dust generated indoor *in situ* will be identified (Julien *et al.*, 2008) and characterized (Roberts *et al.*, 1992).

PROBLEM FORMULATION DOCUMENT

January 3, 2018

Page 4

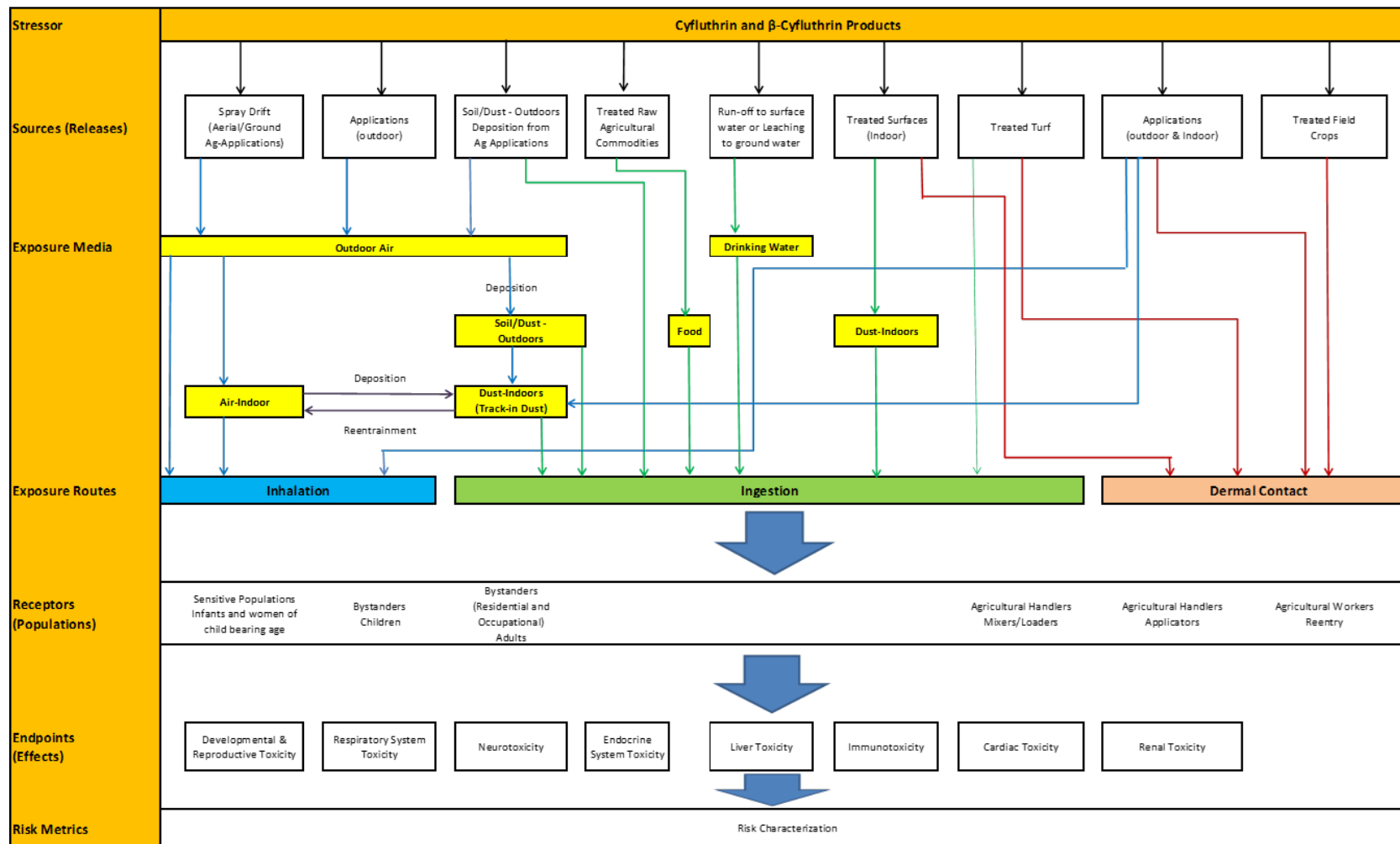


Figure 1. Potential exposure pathways of cyfluthrin and  $\beta$ -cyfluthrin containing products in humans.

## **6. Potential mitigation measures to be considered for evaluation in the risk assessment**

The risk assessment will consider the ability of reduced application rates, reduced number of applications, buffer zones, and personal protective equipment to mitigate risks identified in the RCD.

## **7. Data gaps**

No data gaps have been identified in the toxicologic database for cyfluthrin as this time. This problem formulation considered all pertinent data for establishing relevant sources, media, and routes of human exposure to cyfluthrin (i.e., exposure scenarios). The existing data are sufficient for identifying important exposure scenarios presented in Figure 1 (i.e., no data gap). However, additional data may be needed to conduct in-depth or refined analysis of the aforementioned exposure scenarios.

## **8. Analysis Plan**

For the Toxicology Profile and Hazard Identification, DPR's Human Health Assessment Branch (HHA) plans to identify the main toxicological effects and the points of departure (PoD) according to the relevant route of exposure from the following databases:

- Toxicological studies submitted to DPR by the registrant or published in the literature
- Human Incident Data (DPR's Pesticide Illness Surveillance Program, PISP; Sentinel Event Notification System for Occupational Risks (SENSOR)-Pesticides program; case reports with cyfluthrin self-poisoning, Adverse Human Health Effects Reports)
- U.S. EPA Toxicity Forecaster (ToxCast) high-throughput screening assays (HTS, including zebrafish) for indications of pathway disruptions that could lead to toxic outcomes.
- Existing human health risk assessments by other regulatory agencies including U.S. EPA.

For risk characterization, HHA will use the relevant PoDs and measured or estimated exposures to estimate non-cancer Margins of Exposure (MOEs) and/or cancer risk. These risk estimates will be compared to selected targets.

For Risk Appraisal, HHA will inform the risk manager of the confidence it has in the risk estimates by discussing overall uncertainty and variability in the risk assessment.

Following review by the Office of Environmental Health Hazard Assessment (OEHHA) and U.S. EPA, DPR will respond to reviewers and generate a finalized risk assessment document.

## PROBLEM FORMULATION DOCUMENT

January 3, 2018

Page 6

### **9. Timeline for completion of the Risk Characterization Document**

The Human Health Assessment Branch plans to complete the draft RCD by December 2018.

### **10. References:**

Beauvais, S., Powell, S., and Zhao, W. 2007. HS-1826 Surrogate Handler Exposure Estimates for Use in Assessments by the California Department of Pesticide Regulation. . California Environmental Protection Agency. Department of Pesticide Regulation. Worker Health and Safety Branch. 1001 I Street, Box 4015. Sacramento, California 95812.

Eberhart, D. C. 1986. Field Exposure Study; Aerial Application of Baythroid 2 on Cotton. Mobay Chemical Corp. Agricultural Chemicals Division Kansas City Mo (16). (DPR Vol. No. 50317-0049, Record No. 52002) 93.

Eberhart, D. C., and Hixson, E. J. 1985. Exposure Estimates for Mixer/Loaders Applicators and Flaggers Applying Baythroid on Cotton. Mobay Chemical Corp. Agricultural Chemicals Division Kansas City Mo (16). (DPR Vol. No. 50317-0037 Record No. 28876) 6.

Julien, R., Adamkiewicz, G., Levy, J. I., Bennett, D., Nishioka, M., and Spengler, J. D. 2008. Pesticide Loadings of Select Organophosphate and Pyrethroid Pesticides in Urban Public Housing. *Journal of Exposure Science & Environmental Epidemiology* 18:167-174.

Keenan, J. J., Ross, J. H., Sell, V., Vega, H. M., and Krieger, R. I. 2010. Deposition and Spatial Distribution of Insecticides Following Fogger, Perimeter Sprays, Spot Sprays, and Crack-and-Crevise Applications for Treatment and Control of Indoor Pests. *Regul Toxicol Pharmacol*.

Kidwell, J. L., Tomerlin, J. R., and Petersen, B. J. 2000. DEEM. DEEM™ Dietary Exposure Evaluation Model Users Manual.

Klonne, D. R., Fuller, R., and Belcher, T. I. 2000. Determination of Dermal and Inhalation Exposure to Reentry Workers during Hand-Harvesting In Oranges. Multiple Sources: Company And Cooperator Field Reports (Cooperator May Be University Farm Advisors Etc.) (46): Agricultural Reentry Task Force (ARTF). (DPR Vol. No. 50317-0255, Record No. 176445) 362.

Loeffler, W. W. 1986. Baythroid Dislodgeable Residues on Cotton Leaves. Mobay Chemical Corp. Agricultural Chemicals Division Kansas City MO (16). (DPR Vol. No. 50317-0089, Record No. 67819) 26.

## PROBLEM FORMULATION DOCUMENT

January 3, 2018

Page 7

- REJV. 2014. Residential Exposure Joint Venture: National Pesticide Use Survey. Residential Exposure Joint Venture (REJV). MRID 49305901. (DPR Vol. No. 50317-0371, Record No. 296313) 726.
- Roberts, J. W., Budd, W. T., Ruby, M. G., Camann, D. E., Fortmann, R. C., Lewis, R. G., Wallace, L. A., and Spittler, T. M. 1992. Human Exposure to Pollutants in the Floor Dust of Homes and Offices. *Journal of Exposure Analysis and Environmental Epidemiology* 2(Suppl. 1):127-146.
- Stout, D. M., Wright, C. G., and Leidy, R. B. 1995. Methods to Detect Cyfluthrin in Ambient Air and on Surfaces Following Its Application for the Control of Pests. *Journal of Environmental Science and Health, Part B: Pesticides, Food Contaminants, and Agricultural Wastes* 30:765 - 777.
- Teske, M. E., Bird, S. L., Esterly, D. M., Curbishley, T. B., Ray, S. L., and Perry, S. G. 2002. AgDrift®: A Model for Estimating Near-Field Spray Drift from Aerial Applications. *Environmental Toxicology and Chemistry* 21:659-671.
- Teske, M. E., and Curbishley, T. B. 2011. AGDISP Version 8.25 User Manual. C.D.I.Report No 09-27C Continuum Dynamics, In. 24 Lexington Avenue, Ewing, NJ 08618. Prepared for Harold W. Thistle. USDA Forest Service, 80 Canfield Street, Morgantown, WV 36505, pp. 82. Continuum Dynamics, Inc., 34 Lexington Avenue, Ewing, NJ 08618.
- U.S. EPA 1998. Estimating The Drinking Water Component Of A Dietary Exposure Assessment.
- U.S. EPA 2012. Standard Operating Procedures for Residential Pesticide Exposure Assessment (Revised October 2012). In *Residential SOPs*, pp. 582.
- U.S. EPA 2016. Swimmer Exposure Assessment Model (SWIMODEL).
- U.S. EPA 2017. Science Advisory Council for Exposure (ExpoSAC) Policy 3 Revised January, 2017, pp. 124
- Zhang, X. 2010. Detections of Pyrethroid Insecticides in Surface Waters from Urban Areas of California, 1993-2010. Department of Pesticide Regulation, Environmental Monitoring Branch, 1001 I Street, Sacramento, California 95812.

PROBLEM FORMULATION DOCUMENT

January 3, 2018

Page 8

**Comments**

This document will be posted on DPR's Web site on the Human Health Risk Assessment and Mitigation page for cyfluthrin and  $\beta$ -cyfluthrin ([http://www.cdpr.ca.gov/docs/whs/active\\_ingredient/cyfluthrin.htm](http://www.cdpr.ca.gov/docs/whs/active_ingredient/cyfluthrin.htm)) for public viewing after being presented to the PREC. The comment period is open for 60 days. Written comments may be sent to:

Risk Assessment – (Cyfluthrin and  $\beta$ -Cyfluthrin)

Attn: Risk Assessment Coordinator

Pesticide Registration Branch

Department of Pesticide Regulation

1001 I Street, P.O. Box 4015

Sacramento, CA 95812-4015

Comments will be reviewed and where appropriate, technical suggestions will be incorporated into the text of the draft RCD.