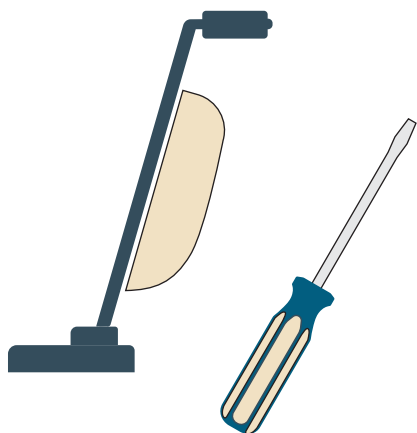


Integrated Pest Management at Home

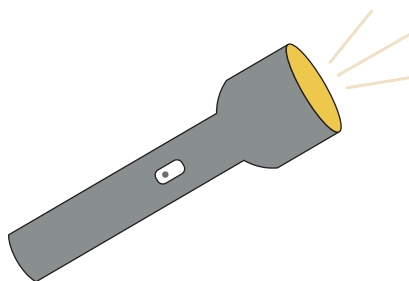
Integrated Pest Management, or IPM, combines multiple practical methods to curb pest activity in your home. If a pest can get inside and find a hiding place with food and moisture nearby, it's a perfect place for them. IPM aims to remove those things to stop the pest life cycle in its tracks.

Prevention is Key!



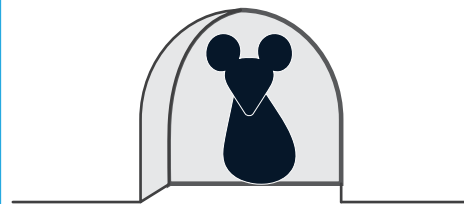
Keep a clean home in good repair to prevent pests from moving in.

Inspect Often



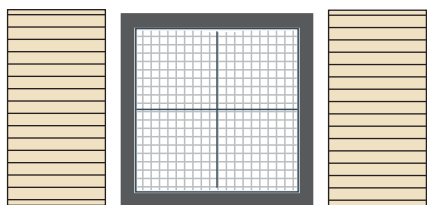
Frequently inspect your home. Early action can stop damage and save you money.

Remove Pest Needs



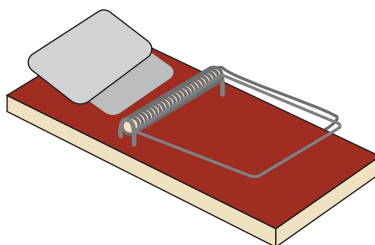
Remove access points, clutter, free food, and water to keep pests from moving in.

Keep Pests Out



Weatherproof and repair openings around your home to close pest access points.

Try Mechanical Methods First



Look into traps and devices used for your specific pest.

If a Pesticide is Needed, Read the Label First!



All pesticides must be used according to the label. It is the law.



www.cdpr.ca.gov

California Environmental Protection Agency
dpr Department of
Pesticide Regulation



AskIPM@cdpr.ca.gov