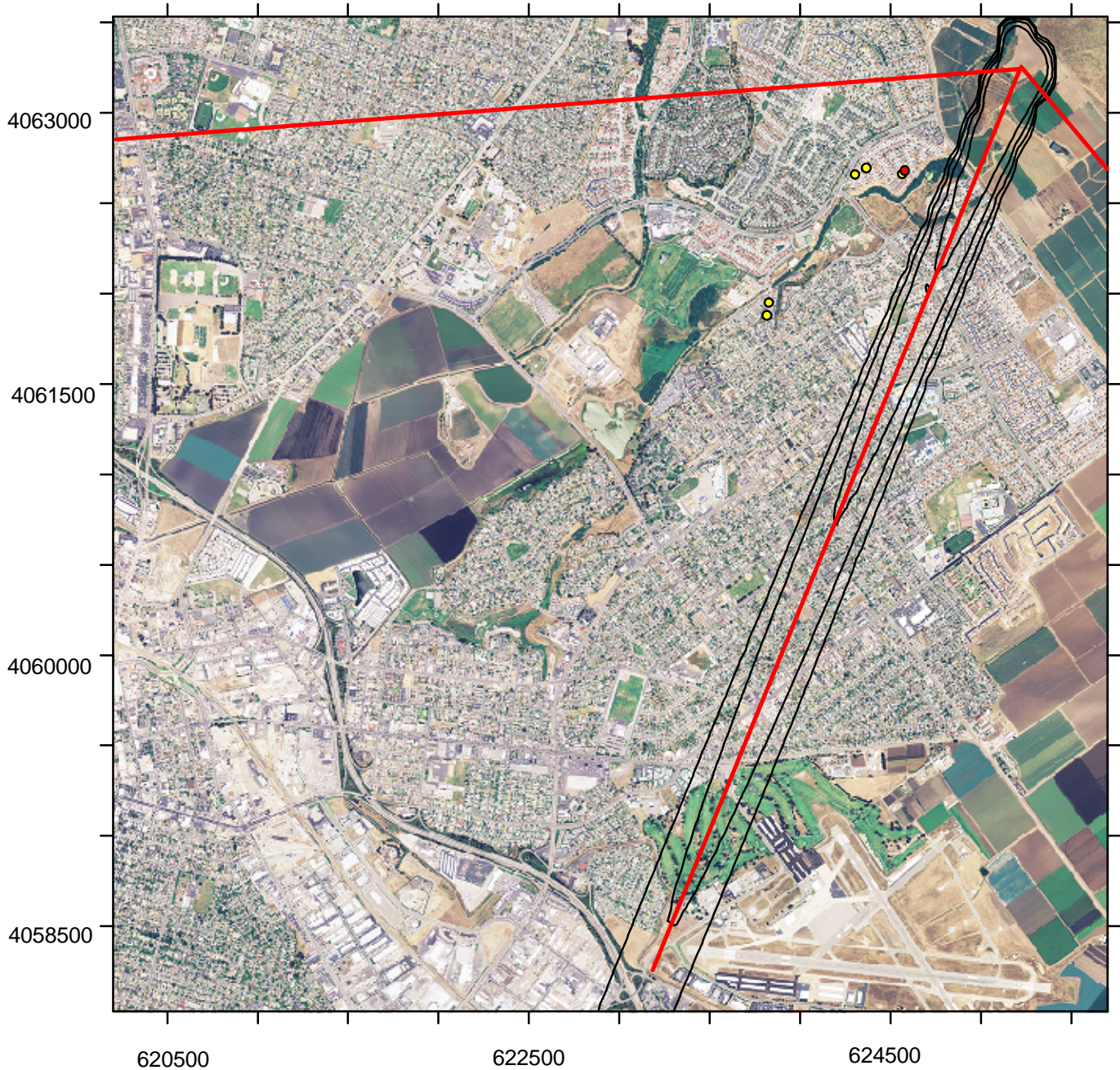


Figure 2. Unitized flux (100ug/m2sec) plume depiction for chloropicrin originating from Block 20 of Daren's Berries, Salinas, California between 1900 and 2000 hrs (PDT) October 5, 2005. Each isopleth shown is one half the magnitude of the previous isopleth, beginning with the isopleth closest to Block 20. Plume isopleths in Figures 2,3, and 4 are on the same scale. The red straight lines show the mean plume direction (center red line) and 80% uncertainty bounds on the location of the mean plume direction. See Appendix B for complete description of the uncertainty bound calculation. The red dot shows the location of the first 911 call received at 2015hrs. The yellow dots show locations where after the fact interviews indicate residences have been affected during 1900 to 2000hrs.

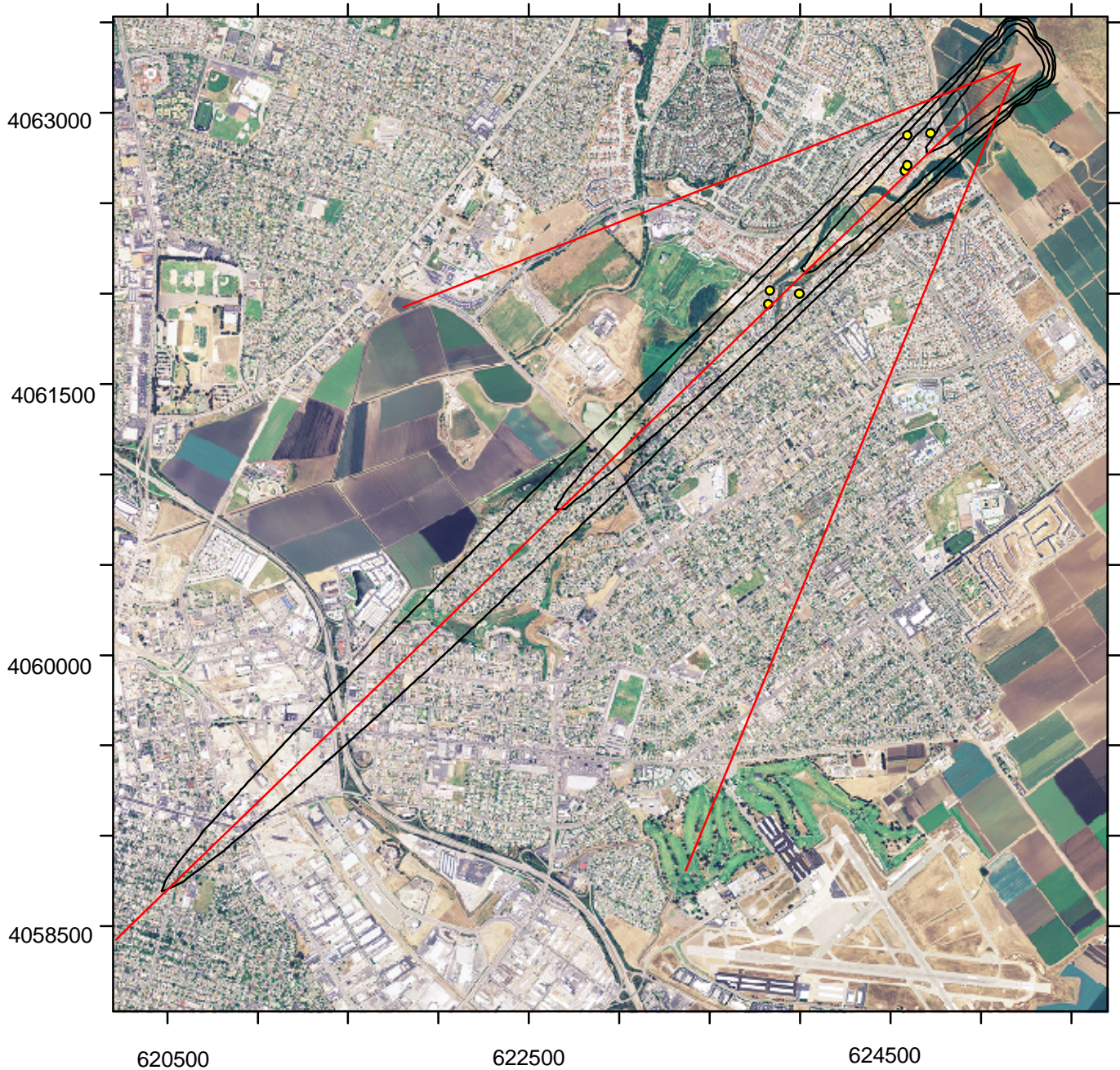
1900 - 2000 Unitized



Coordinate System is NAD 1983 - UTM 10.

Figure 3. Unitized flux (100ug/m²sec) plume depiction for chloropicrin originating from Block 20 of Daren's Berries, Salinas, California between 1900 and 2000 hrs (PDT) October 5, 2005. Each isopleth shown is one half the magnitude of the previous isopleth, beginning with the isopleth closest to Block 20. Plume isopleths in Figures 2,3, and 4 are on the same scale. The red straight lines show the mean plume direction (center red line) and 80% uncertainty bounds on the location of the mean plume direction. See Appendix B for complete description of the uncertainty bound calculation. The yellow dots show locations of 911 calls received during the hour.

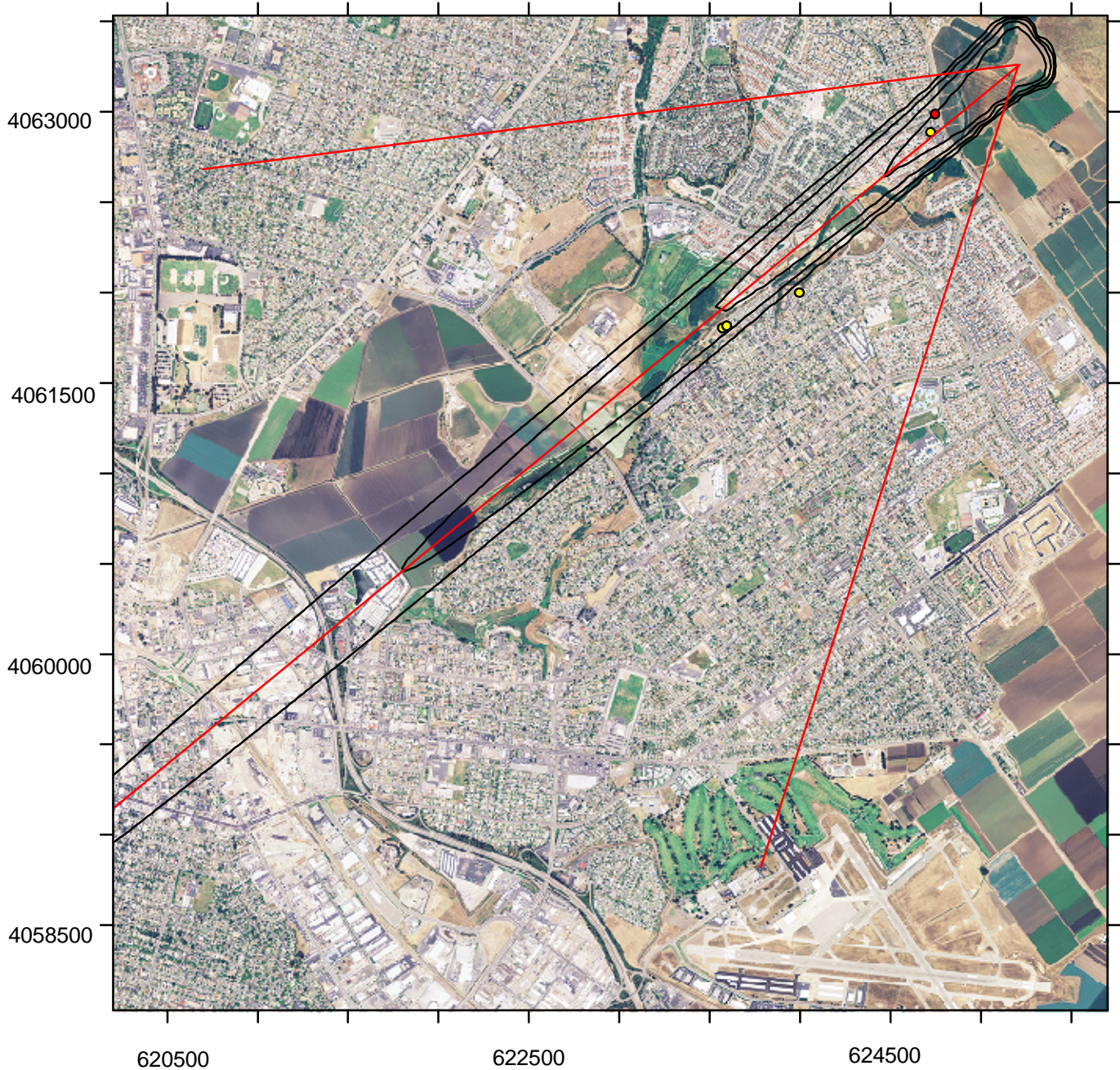
2000 - 2100 Unitized



Coordinate System is NAD 1983 - UTM 10.

Figure 4. Unitized flux (100ug/m2sec) plume depiction for chloropicrin originating from Block 20 of Daren's Berries, Salinas, California between 1900 and 2000 hrs (PDT) October 5, 2005. Each isopleth shown is one half the magnitude of the previous isopleth, beginning with the isopleth closest to Block 20. Plume isopleths in Figures 2,3, and 4 are on the same scale. The red straight lines show the mean plume direction (center red line) and 80% uncertainty bounds on the location of the mean plume direction. See Appendix B for complete description of the uncertainty bound calculation. The red dot shows the location at 2158hrs of the officer at the corner of Boronda and Constitution. The yellow dots show locations of the 911 calls received during the hour.

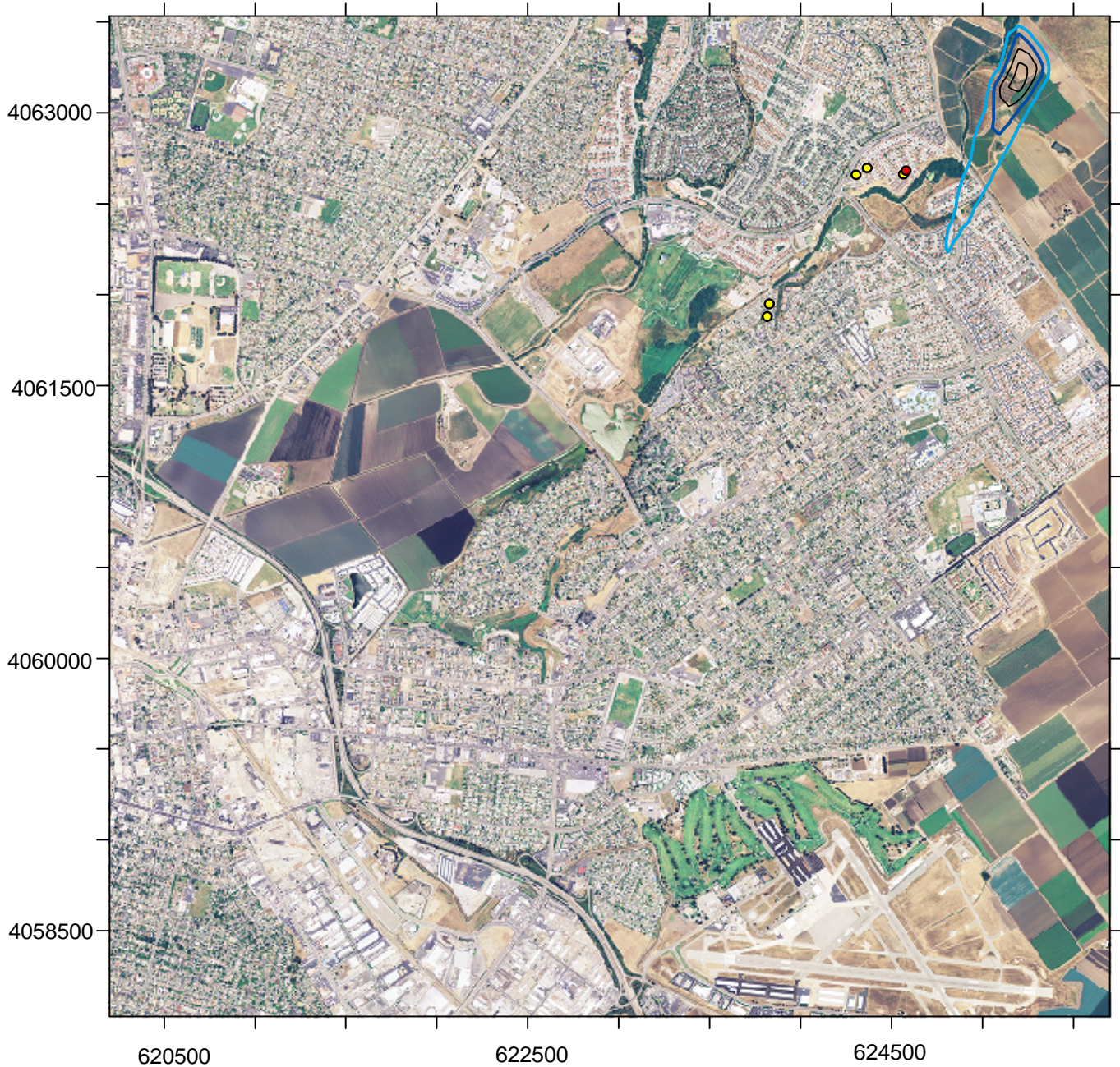
2100 - 2200 Unitized



Coordinate System is NAD 1983 - UTM 10.

Figure 5. Estimated chloropicrin air concentrations associated with estimated chloropicrin mass released from sprinklers used on Block 20 of Daren's Berries, Salinas, California. Chloropicrin air concentration estimates are for the interval 1900hrs to 2000hrs (PDT) October 5, 2005. The red dot shows the location of the first 911 call received at 2015hrs. The yellow dots show locations where after the fact interviews indicate residences have been affected during 1900 to 2000hrs.

1900 - 2000 Sprinkler



Coordinate System is NAD 1983 - UTM 10.

Chloropicrin concentration isopleths (ppm)

- | | |
|--------|--------|
| — 0.05 | — 0.15 |
| — 0.1 | — 0.2 |