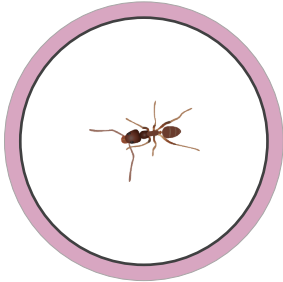
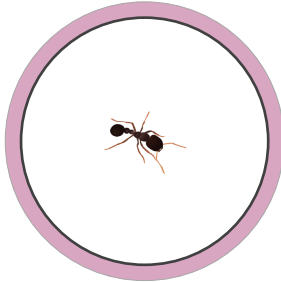




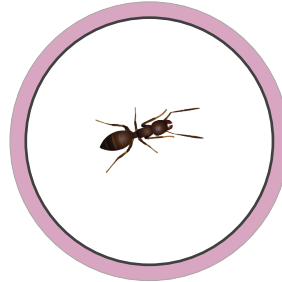
## Identification



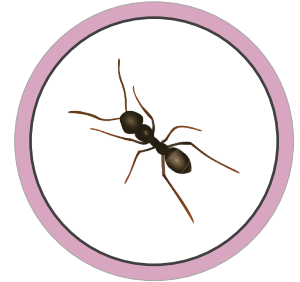
Argentine Ant



Odorous Ant



Pavement Ant



Carpenter Ant

## Management

### Insecticides

Pesticidal sprays are a temporary solution and should be used as a last resort.

### Sanitation

Place food in sealed containers and clean-up any food or water spills that may attract ants indoors.

### Baiting

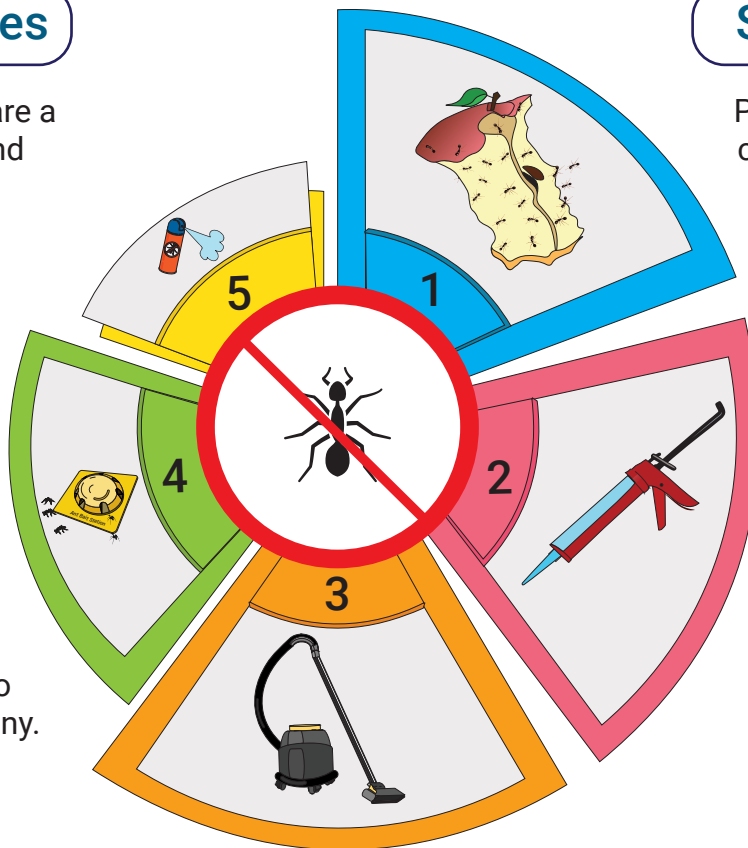
If pesticides are needed, use baits to provide long-term control. Baits take advantage of the ants food sharing behavior to eliminate the colony.

### Prevention

Seal gaps, cracks, and any access points that ants are using to enter inside.

### Vacuuming

Mechanically remove ants and wipe the pheromone trail with soapy water.



# Managing Conducive Conditions

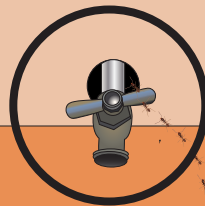
## Sanitation

Clean-up food and water that may attract ants indoors.



## Access Points

Seal gaps and cracks to prevent ants from entering indoor areas.



## Food Storage

Keep food in tightly sealed containers to reduce food sources for ants.

## Ant Behavior

Ants are social insects that live in colonies. The worker ants find food and share it with other workers, larvae and queen(s). This behavior is why slow-acting baits are effective in killing the colony.

