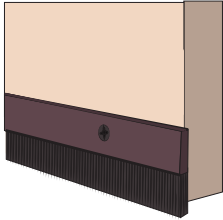


Best Management Practices for Cockroaches

Prevent



Install door sweeps and seal gaps on exterior walls and around plumbing to prevent indoor access.

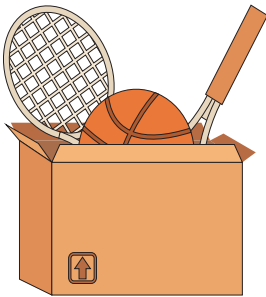
Clean

Remove food and water sources.



Declutter

Get rid of clutter to remove hiding places for cockroaches.



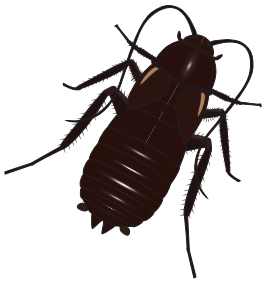
Monitor

Use traps and do site inspections year-round to monitor for cockroaches. Inspect boxes and other deliveries for hitchhiking pests.



Identify

Cockroach species have different behaviors and location preferences. Identify the species to plan for effective management.



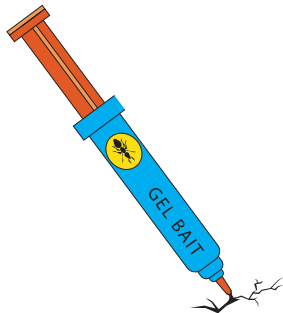
Remove

Use a vacuum with a HEPA filter to remove cockroaches, egg cases, droppings, and shed skins.



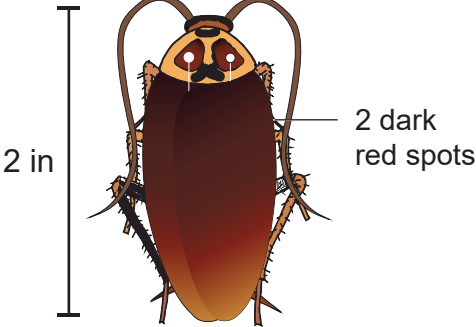
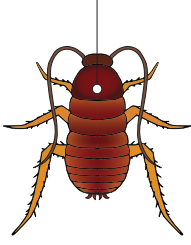

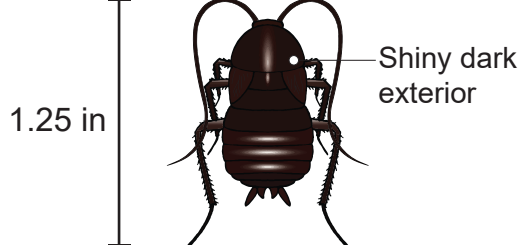


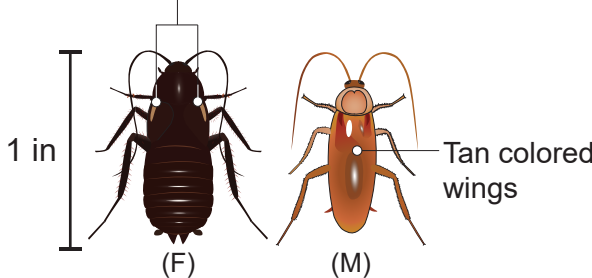


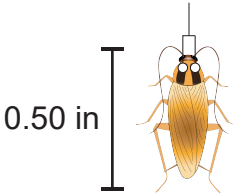

Bait

Use bait in combination with insect growth regulators to eliminate cockroaches.



COCKROACH ID

Cockroach species have different behaviors and location preferences.
Identify the species, then choose effective management strategies

	ADULT	NYMPH	EGG
<p>American Cockroach</p> <p>Location: Humid environments Sexual maturity: ~15 months Life span: 2–3 years Ootheca: 16 eggs Egg size: 3/8 inch long</p>	 <p>2 in</p> <p>2 dark red spots</p>	<p>Reddish-brown exterior</p> 	<p>Symmetrical</p> 
<p>Oriental Cockroach</p> <p>Location: Indoor/Outdoor Sexual maturity: ~12 months Life span: 1–2 years Ootheca: 16 eggs Egg size: 3/8 inch</p>	 <p>1.25 in</p> <p>Shiny dark exterior</p>	<p>Light brown exterior, darkens with each molt</p> 	<p>Asymmetrical</p> 
<p>Turkestan Cockroach</p> <p>Location: Indoor/Outdoor Sexual maturity: ~7 months Life span: ~13 months Ootheca: 16 eggs Egg size: 3/8 inch</p>	<p>2 cream colored strips</p>  <p>1 in</p> <p>Tan colored wings</p> <p>(F) (M)</p>	<p>Red to black exterior</p> 	<p>Asymmetrical</p> 
<p>German Cockroach</p> <p>Location: Indoor Sexual maturity: ~2 months Life span: ~6 months Ootheca: 40 eggs Egg size: 1/4 inch</p>	<p>2 dark stripes</p>  <p>0.50 in</p>	<p>Yellow stripe in center</p> 	<p>Visible subsegments</p> 