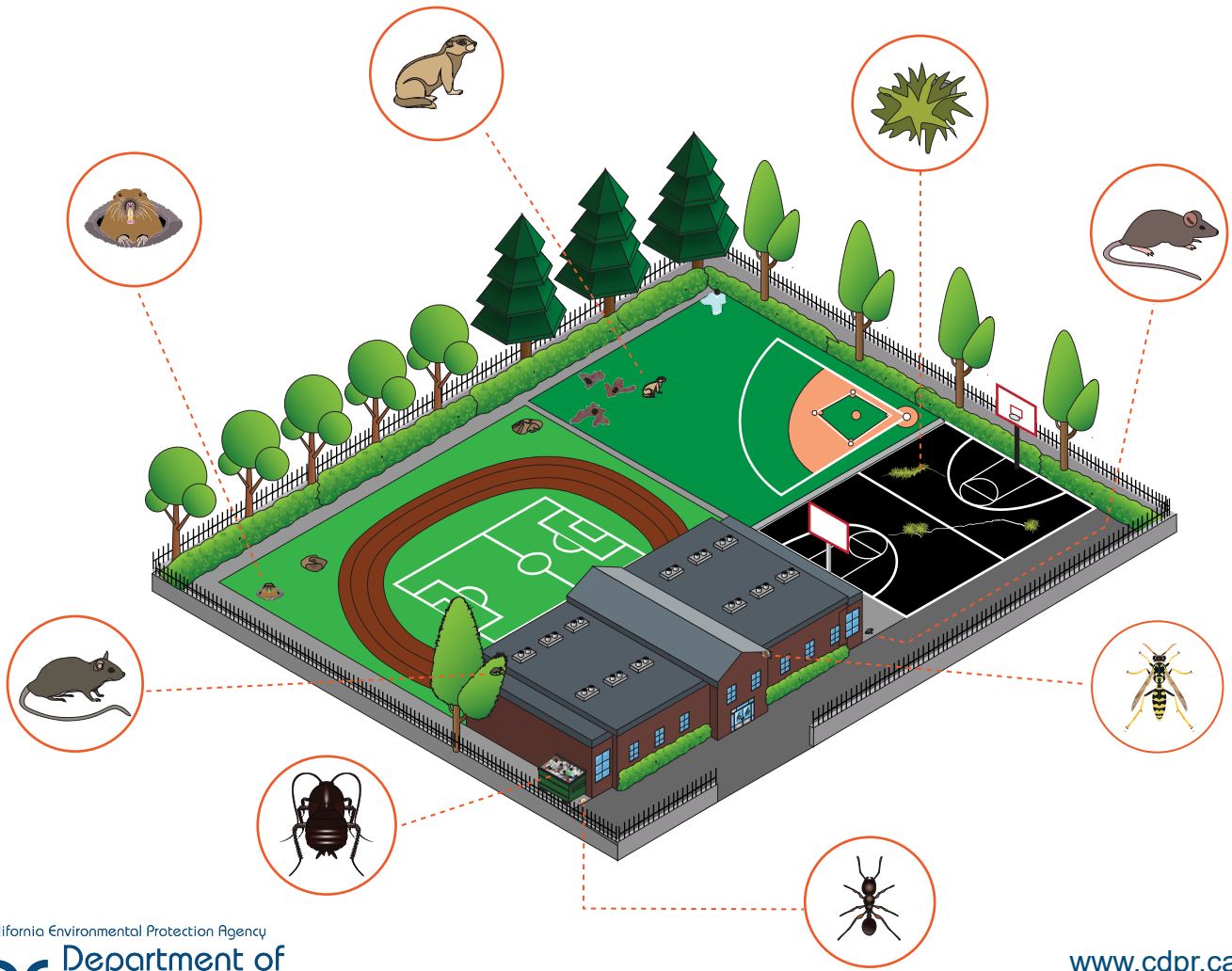


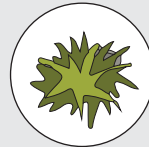
INTEGRATED PEST MANAGEMENT AT SCHOOLS



CONDUCTIVE CONDITIONS



Broken irrigation lines provide water sources for pests.



Cracks in pavement create habitats for weeds.



Weeds, like clover, encourage gopher infestations on turf.



Dense vegetation growing close to buildings provide shelter for pests.



Tree limbs touching the roof grant pests access to buildings.



Access to sugary beverages attract paper wasps.

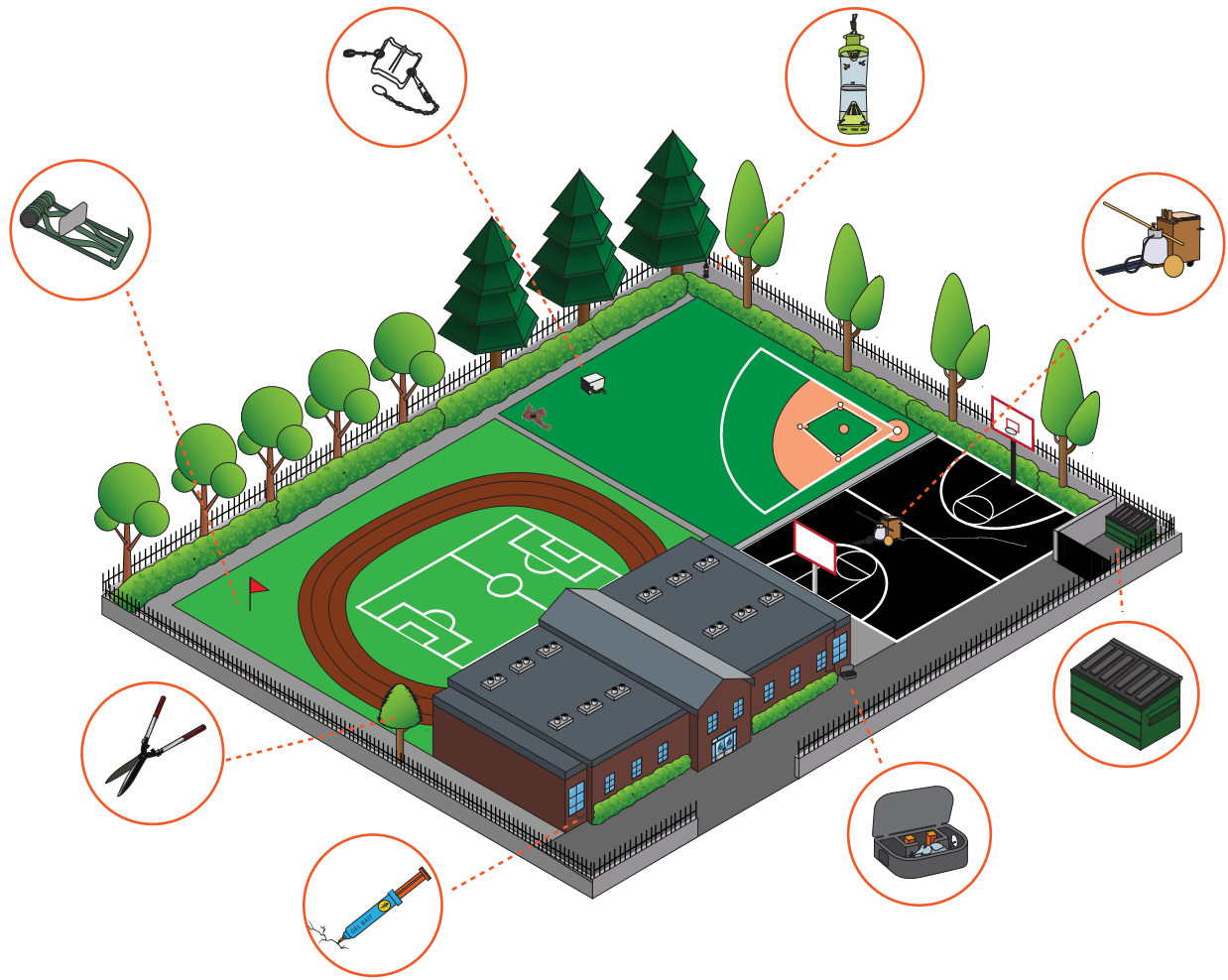


Open dumpsters provide food for pests.



Garbage littered around schools provide food for pests.

INTEGRATED PEST MANAGEMENT AT SCHOOLS



IPM SOLUTIONS



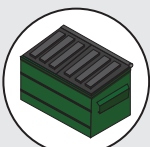
Trap ground squirrels and fix irrigation leaks to eliminate water sources for pests.



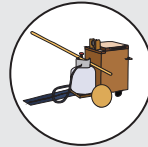
Trap gophers and practice good lawn care to reduce weed invasion.



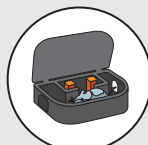
Trim back tree limbs to prevent pests from accessing the roof.



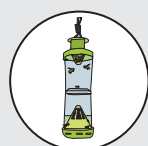
Place dumpsters at least 50ft away from buildings and cover with tight-fitting lids to block pests access.



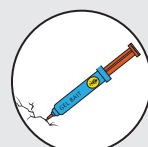
Seal cracks in pavement to prevent weed growth.



Trap commensal rodents and trim back dense vegetation to reduce pests habitat.



Use lure traps to capture wasps and clean-up sugary beverage spills to avoid attracting pests.



Apply baits to reduce ant population size and clean-up garbage to eliminate food sources.