

Modified Insects for Pest Management Workshop

JT Teerlink, PhD

Deputy Director and Science Advisor



Mission

We protect people and the environment by regulating pesticides and fostering sustainable pest management.



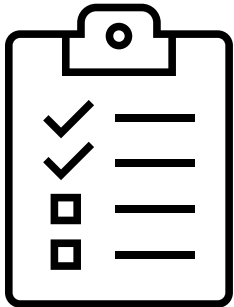
Defining Sustainable Pest Management (SPM)

Sustainable Pest Management (SPM) is a **holistic, whole-system approach** to managing pests in agricultural and other managed ecosystems and urban and rural communities.

SPM **builds on the concept and practice of integrated pest management (IPM)** and land stewardship to include the wider context of three sustainability pillars:

- Human Health and Social Equity
- Broadened Environmental Protections
- Economic Viability

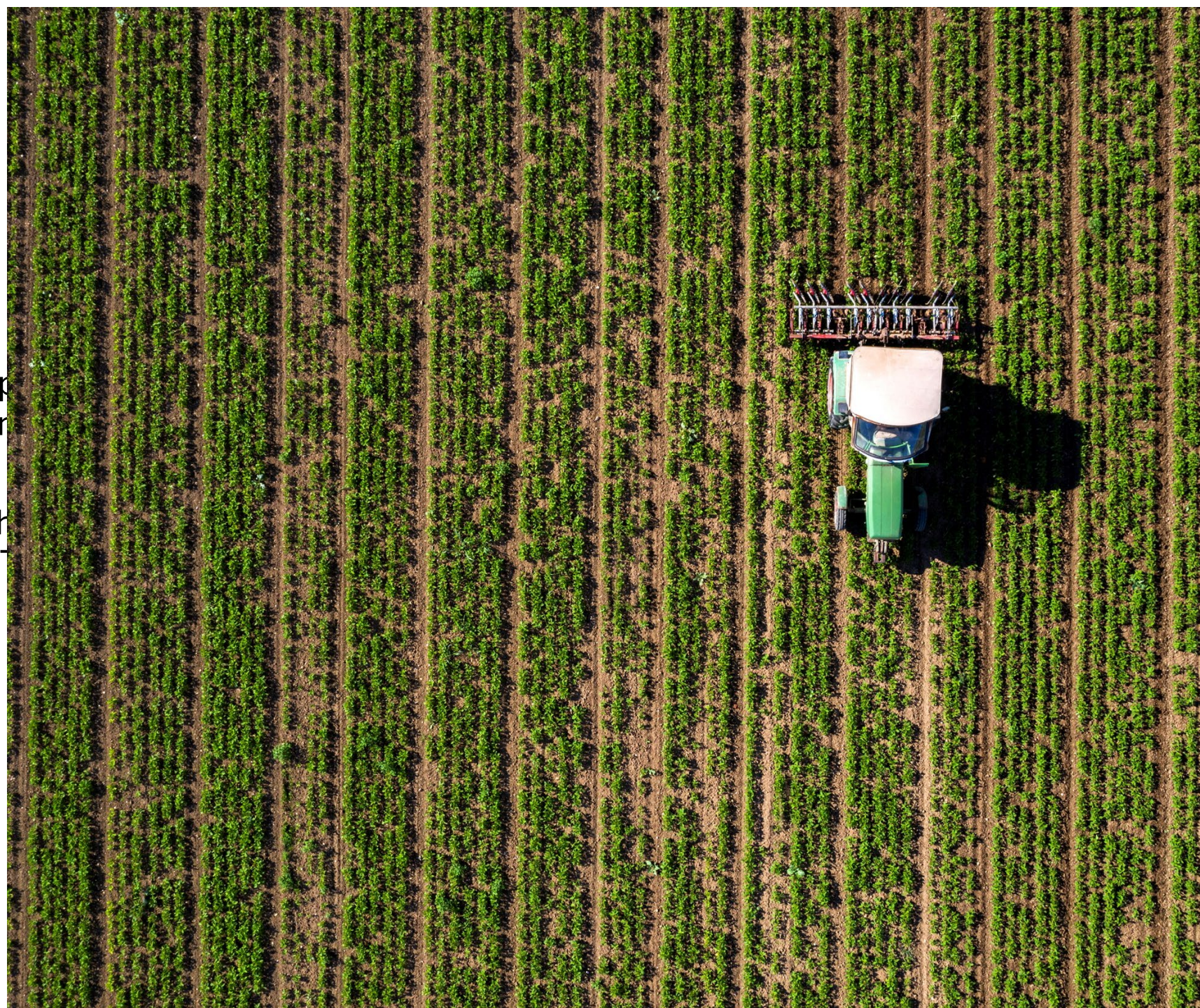
Keystone Actions



- Prioritize **prevention**
- Coordinate state-level **leadership**
- Invest in building SPM **knowledge** (in agricultural and urban settings)
- Improve California's pesticide **registration** processes and bring alternative products to market
- Enhance **monitoring** and data collection

Pesticide Registration

- Additional positions to help improve registration timeline for all products.
- Modernize process through implementation of CalPEST electronic system.
- Evaluate emerging technologies that require pesticide registration.



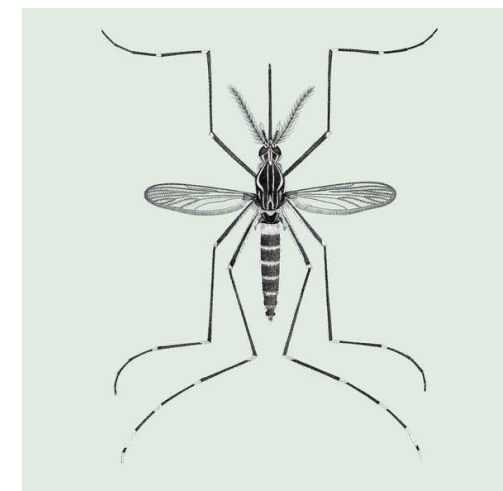
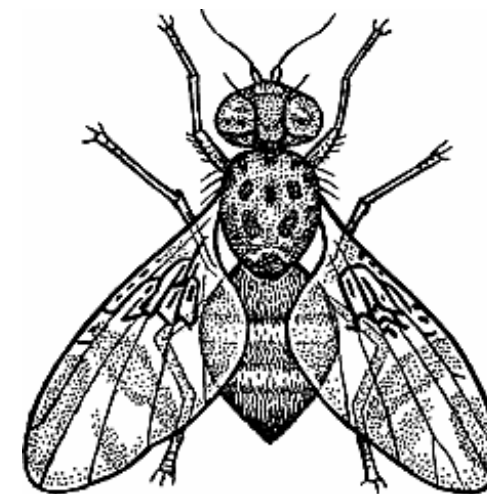
Emerging Technology

- Reduce the amount of chemical pesticides applied
- Reduce broad spectrum pesticide applications
- Increase targeting of specific pests



2023 Fall Workshop cohosted with CDPH and CDFA

Novel, Non-Chemical Technologies for
Pest and Vector Management – Engineered
and Sterile Insects, and Related
Technologies



Overview of today

- US EPA Perspective
- DPR
 - Overview of the Registration and Evaluation Process
 - Product Identity Evaluation
 - Ecotoxicology Evaluation
 - Human Health Evaluation
 - Efficacy Evaluation



Next Steps

Accepting public comments through
December 15, 2024.

Comments can be submitted
electronically at:
[https://cdpr.commentinput.com/?id=DiQ
gjATuF](https://cdpr.commentinput.com/?id=DiQgjATuF) , or

